

Focusing on News & Information
for Contemporary Controls'
Valued Customers

NETWORK

INSIDE

- Tech Update2
- International News3
- The EXTENSIONinsert

TRADE SHOWS

**Bolster your knowledge of the industry
by attending these trade shows.**

**Light + Building Show
International Trade Fair for
Architecture and Technology**
April 23-27, 2006
Exhibition Centre Frankfurt
Hall 9.1, Stand E78
Frankfurt, Germany

**Tridium Conference 2006
Niagara Summit**
April 30-May 2
Saddlebrook Resort
Wesley Chapel, FL USA



Contemporary Controls' Commitment to RoHS Compliant Manufacturing

As a follow-up to Contemporary Controls' commitment to developing environmentally-friendly products, its manufacturing facility in Suzhou, China has converted to a lead-free operation as specified by the European Union's RoHS (Restriction of Hazardous Substances) Directive on chemical substances.

Contemporary Controls (Suzhou) Co. Ltd (CCC) has abolished the use of lead in their equipment, well before the time the directive goes into effect in July 1, 2006.

Plant Manager Basile Waite says significant changes in materials and procedures were accomplished to offer products and solutions to meet their customers' requirements. "The steps taken during this period ensured that the quality our customers have come to know wasn't lost in the process," explains Waite.

The process began with the plant's identification, labeling, and segregation of both leaded and unleaded components. The Surface Mount Technology (SMT) line conversion involved adjusting



Suzhou workers Cindy and Marty are testing ARCNET transceivers coming down the assembly line.

the stencil printer and adjusting reflow profiles for lead-free solder paste for every product. For our Pin Through Hole (PTH) line, we added entry and exit conveyors and solder wave conversion was completed, including the changing out of the solder pots. Waite says that in order to serve their customers better and quicker, flexible assembly systems were purchased. "The assembly line is ideal for our needs," he says. "It is 10 m in length, double-sided and features a conveyor belt down the middle. These new assembly systems will allow us to make a batch of 100 or 1000 without having to change any of the set up."

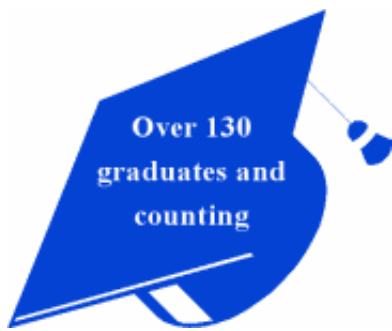
Solder wave conversion included refitting pumps and changing solder pots to titanium pots with Tin Silver Copper (SAC) alloy solder. Rework stations were refitted for lead-free operation. Finally, products were marked to indicate RoHS compliance.

Contemporary Controls (CC)

Contemporary Controls' headquarters located in Downers Grove, Illinois, will transition to a lead-free process by the July 2006 deadline. A new reflow oven will be purchased in order to solder at the required temperatures. The Vitronics® XPM820 is designed with eight heating zones, two cooling zones, and it will occupy 10 ft. of processing space. Plant personnel intend to retrofit the company's soldering machine so work benches and shelves will need to be repositioned. Also, a new exhaust system will be implemented. All plant personnel will receive skilled training on new equipment and procedures.

Currently, the company is reviewing their existing product line. Customers will be encouraged to review the RoHS Compliant Product Roadmap (www.ccontrols.com/pdf/rohs2.pdf) to be assured that a product of interest is scheduled to be converted to lead free. If not, the company will make a recommendation on a possible substitution if practical. Any questions should be directed to the sales department.

Over 130 Industrial Ethernet University (IEU) Graduates and Counting



Whoever said the individual studying Industrial Ethernet technology has to do it the hard way? Forget carrying heavy books to class. Forget sitting in boring lecture halls.

Contemporary Controls has made this subject much easier to comprehend. And over 130 graduates of the company's virtual Industrial Ethernet University (IEU) can prove it. They all say the information is presented in a well-illustrated, self-paced learning format. More importantly, graduates say, this

information provides a solid reference tool when working with Ethernet networks.

One recent graduate, Constantino Seixas Filho, spoke highly of IEU. Filho is a part-time instructor at the public university in Belo Horizonte, MG, Brazil. He teaches distributed programming for an automation course. Filho said he found the training on IEU outstanding material for his students — so much, that he eliminated his courses on Industrial Ethernet in the university's curriculum and directed his students to enroll in IEU to learn about Ethernet technology. This allowed him and his students to concentrate on other subjects. He also recommended IEU to automation professionals in Brazil, and they all appreciated the site. Filho commented, "It is rewarding to realize that IEU is benefiting professionals and students around the world. It is nice to know that all the work Contemporary Controls places into IEU is having a positive impact. Well done to all who make this happen."

Since the site launched in October of 2003, there have been more than 1600 IEU students ranging from professionals in the industry to college students across the continents. The curriculum consists of 5 core courses, 12 electives, and 9 guest lectures. All material is vendor-neutral and based upon the IEEE Std. 802.3 and relevant Request for Comments (RFCs). "There is constant learning," says George Thomas, President of Contemporary Controls. "Since Ethernet continues to evolve, courses will be added to address advances in the technology that will influence our industry."

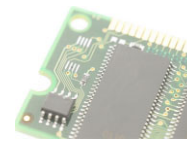
Additional reference information may be obtained through the university's library and bookstore. The bookstore has a direct link to <http://www.amazon.com>. Material in the bookstore has been reviewed and found beneficial by Contemporary Controls.

William Greer, the company's Senior Product Specialist, is IEU's virtual professor. Greer will answer any question by private e-mail. If he is unable to provide sufficient clarification, other experts from the company or outside sources will be consulted.

Students must master and complete the minimum ten courses to qualify for "graduation." Upon "graduation" students will receive a certificate of accomplishment and the opportunity to add his or her name to the IEU Alumni directory.

Graduation is not mandatory. Students can select courses of interest. Best of all — it is FREE!

Sign up now by visiting the virtual campus at <http://www.IEU.cc>.



Managed Switch Firmware Upgrades

Contemporary Controls is continually adding features to its various lines of managed switches. You can keep your switch up-to-date by downloading the latest firmware for your particular unit and performing a field upgrade.

To download the firmware, first point your web browser to:

www.ctrlink.com/switches.htm#Managed

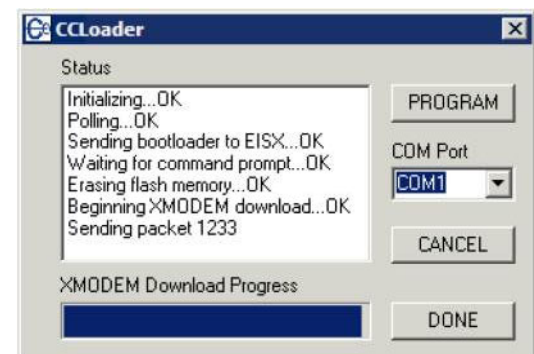
then click on the link for your switch.

After the product description page for your switch opens, scroll down to the "More Information" section and choose the link appropriate for your type of switch. There will be two "Firmware Download" options: one for switches having only copper ports and one for units that also have fiber ports.

To load the firmware to your switch, you will need to connect a null-modem cable from the "Console" port of your switch to any available serial port on the computer you use for the process.

The download will consist of a set of files including a text file that guides you through the steps of the process.

During the download, a pop-up window will display the progress of each phase of the process. A sample screen appears below.



Ethernet Managed Switch Identifies Savings Beyond Pumps Themselves



The SNMP feature of the EICP8M is utilized to provide diagnostics and statistics on every Ethernet interface and node.

Engineers at a water treatment facility in Missouri were looking to increase the operating performance of its intake pumping station (6 150HP pumps) to help eliminate breakdowns. With budget cuts, reduced personnel and time, engineers sought a solution defined by functionality and price. The project required Contemporary Controls' EICP8M managed switch utilizing IGMP snooping to keep the Allen-Bradley Control Logix PLC traffic off the radio network. The low bandwidth radio linked the pumping station into the main SCADA system. By using SolarWinds SNMP management software, engineers would be able to constantly monitor traffic on each port of the switch in order to provide charts and graphs of data rates, response times, etc.

Proper switch selection can identify savings opportunities beyond the pumps themselves. That's why the company's engineers selected Contemporary Controls' EICP8M because in the words of one engineer, "Contemporary Controls offered the most cost-effective Industrial Ethernet switch that supported IGMP Snooping, SNMP and port mirroring. It was compatible with our software and other equipment. The port mirroring function greatly assisted with network troubleshooting. Savings were incurred by not directly sending out mechanics on site to diagnose problems."

The EICP8M met all the requirements of the project including IGMP Snooping, SNMP support, port mirroring, industrial temperature range, surge protection, DIN-rail installation, web page configurability, and 24 VDC power supply. The engineers said they were pleased with the switch's performance as well as in working with Contemporary Controls to find the right fit for this application. All the engineers stated they will consider the EICP8M as their standard switch as other projects come up in the future.



Former Merchant Building in Eisleben, Germany, is New Home to Contemporary Controls GmbH

Located directly at the market square of Eisleben, Germany, is the building that houses the new office of Contemporary Controls GmbH (CCG). Eisleben is one of the oldest towns between the Harz Mountains and the river Elbe. It is an industrial city and has been a copper-mining center since the 14th century.

The new office is 100 sq. meters and includes an inventory room, conference area and a kitchen. The new office provides much needed space, not available in the building that CCG shared with Heyfra.

CCG Sales Manager Jan Thriene says the structure dates back to the year 1500 and was a former merchant building through all the past centuries. He says the building is under monumental protection.

Thriene added that the structure offers a great view on the market square itself and also the characteristic stockpiles of the copper mining outside the city. The city has much historical significance because in Eisleben are the house in which reformer Dr. Martin Luther was born, the church where he was baptized, and the house in which he died.

He says, "It is nice that Contemporary Controls can share a part of history. The history that is so important to the people of Eisleben and to Germany."




CCG's new office in the historic building faces the statue of the reformer Dr. Martin Luther in the market square. Luther's birthplace, a memorial since 1693, is the oldest museum in the German-speaking area.

Contemporary Control Systems, Inc.
2431 Curtiss Street
Downers Grove, IL 60515 USA

Address service requested.

NEW Product Interest Literature

- EICP8M Managed Switch
- Skorpion Switches
- BAS Switches



US fax back and e-mail:
1-630-963-0109
info@ccontrols.com

UK fax back and e-mail:
+44 (0)24 7641 3923
ccl.info@ccontrols.com

Germany fax back and e-mail:
+49 (0)341 520359-16
ccg.info@ccontrols.com

China fax back and e-mail:
+86 512 68095966
info@ccontrols.com.cn



- As a manufacturer, are you RoHS compliant? Contemporary Controls is taking the steps to fulfill the requirements. Already, the company's subsidiary in China has transitioned to a lead-free operation. Headquarters in Downers Grove, IL, plans meeting the directive by July 2006.
- You can keep your switch up-to-date today by downloading the latest firmware from Contemporary Controls for your particular unit and performing a field upgrade.
- Get into the "know" about our company's virtual Industrial Ethernet University (IEU). Read how one graduate and many more benefited from this site. It just may make you enroll as a student!